

# **Eurydice of Macedon and Memory of the Past**

**Elizabeth Carney**



## Philippeum: remains and reconstruction

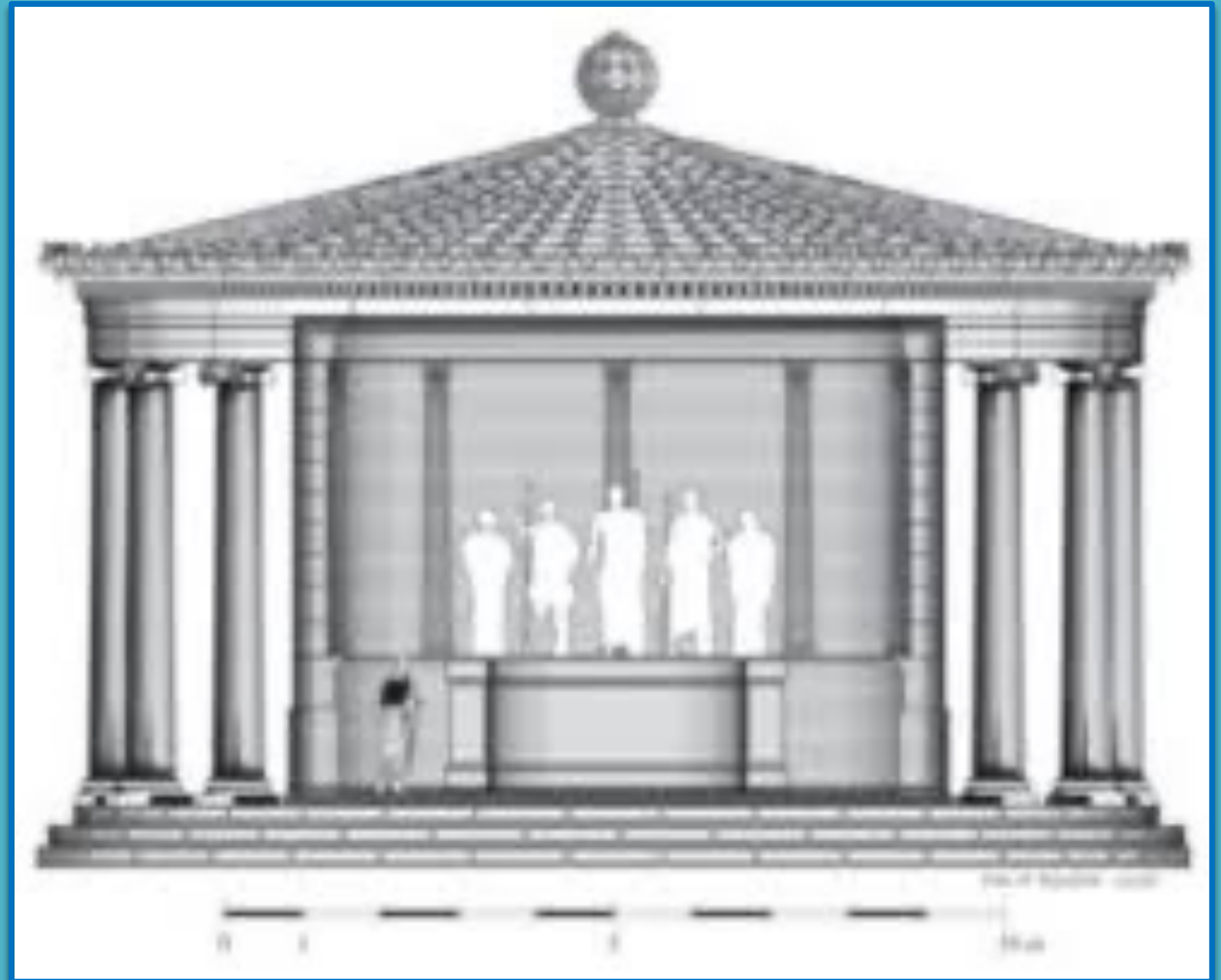


RECONSTRUCTION: J. E. BRUCE, PINTEREST

# Cut-away elevation of Philippeum with silhouettes of statues

Hermann, van d Löcht, Schultz

Drawing: David Boggs



# Aegae/Vergina, plan Kyriakou 2020



# Aegae/Vergina, Palace

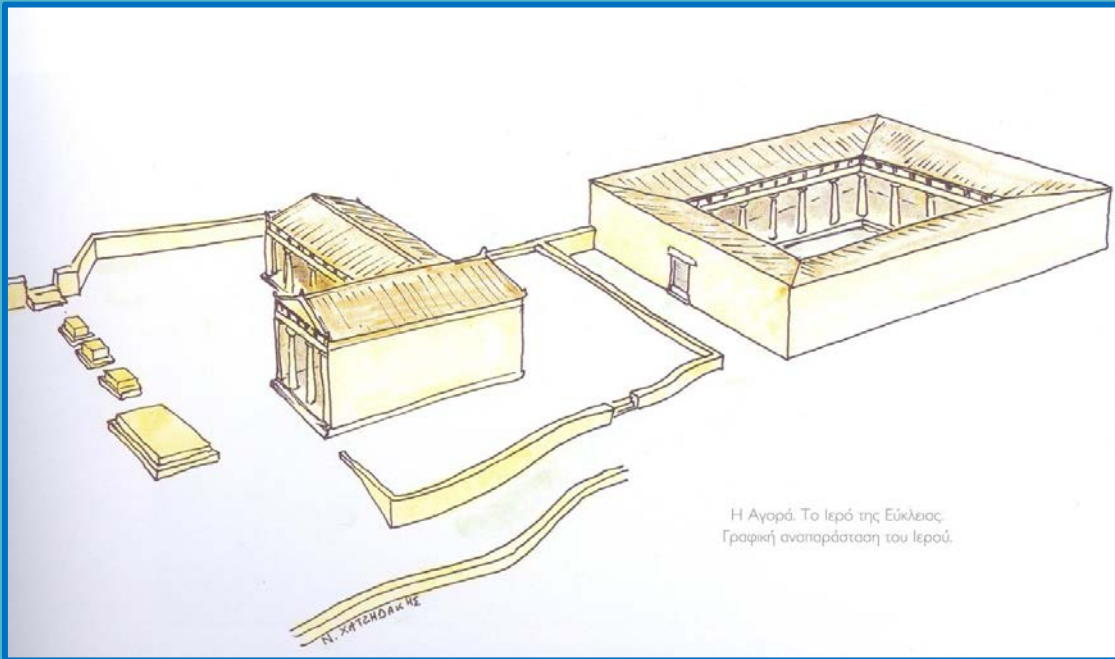
May 2020 AMNA/A. Kottaridi



# Theatre at Vergina

photo: K. Mortensen





## Eucleia sanctuary in 4th century BCE:

**three statue bases, altar, Doric temple, west stoa, peristyle**

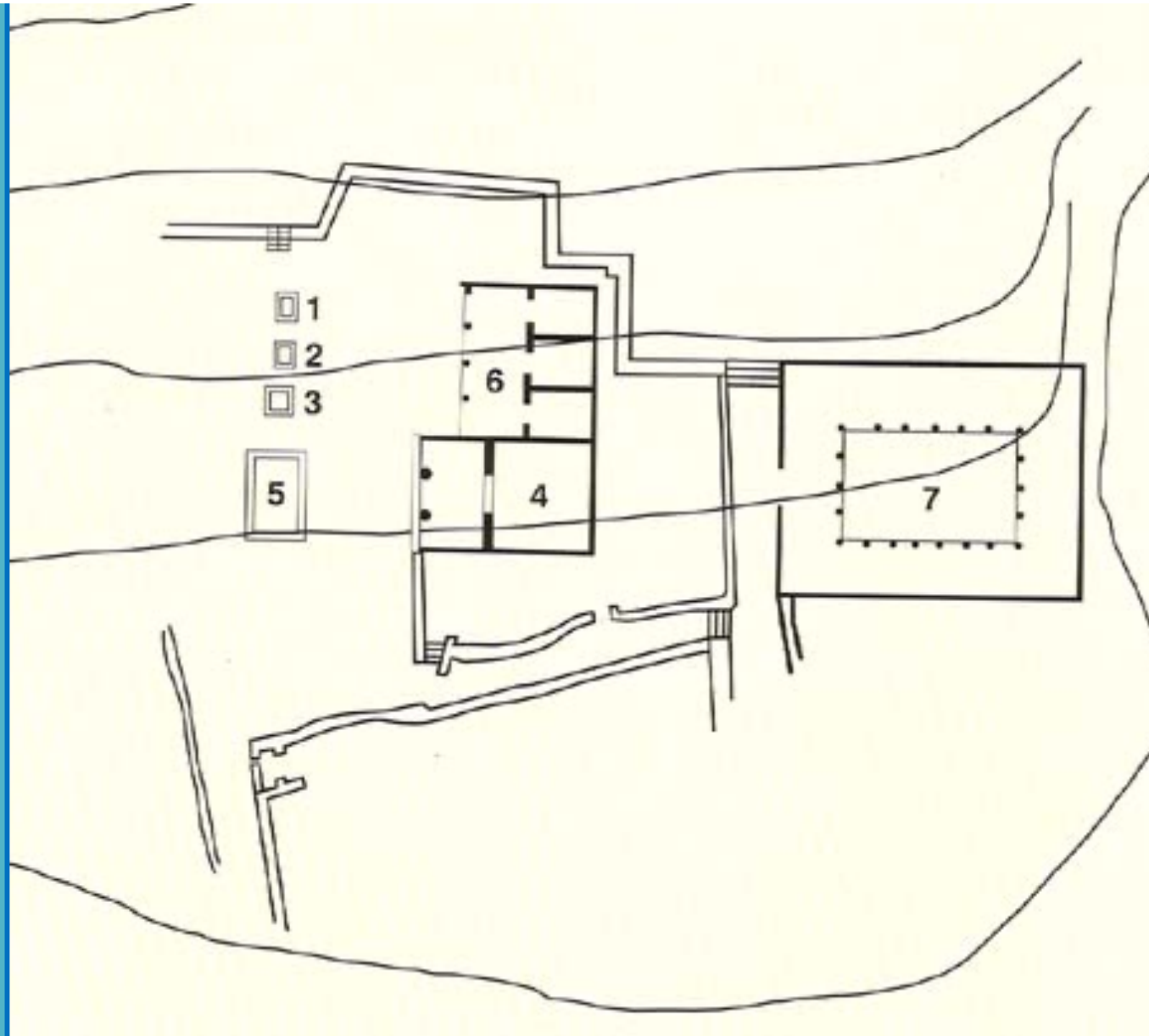
archive of the Excavation of Vergina, Drougou and Saatsoglou-Paliadeli,



## Eucleia sanctuary in 4<sup>th</sup> century:

1, 2, 3 are bases for statues, 4 is the Doric temple, 5 the altar, 6 the west stoa .

drawing Saatsoglou-Paliadeli





**Statue base found in situ in Eucleia sanctuary:**

**dedicatory inscription appears within a band, "Eurydice, daughter of Sirras"**

*Andronikos 1987*



## Close-up: Dedicatory inscription from in situ base in Eucleia sanctuary

Archive of the Excavation of Vergina, Y. Yiarneios



**Statue base  
from 1990 pit**

pit 1990

hand

face

statue

base

male head

female head

arm

## Statue parts as found in 1990 pit

Aristotle University of Thessaloniki, Excavation at Vergina, drawing N. Haddad in Saatoğlu-Paliadeli 1990

# Statue body in 1990 pit

archive of the excavation of Vergina, Y. Yianneios





**Statue face  
held in place**

## Peplophoros statue



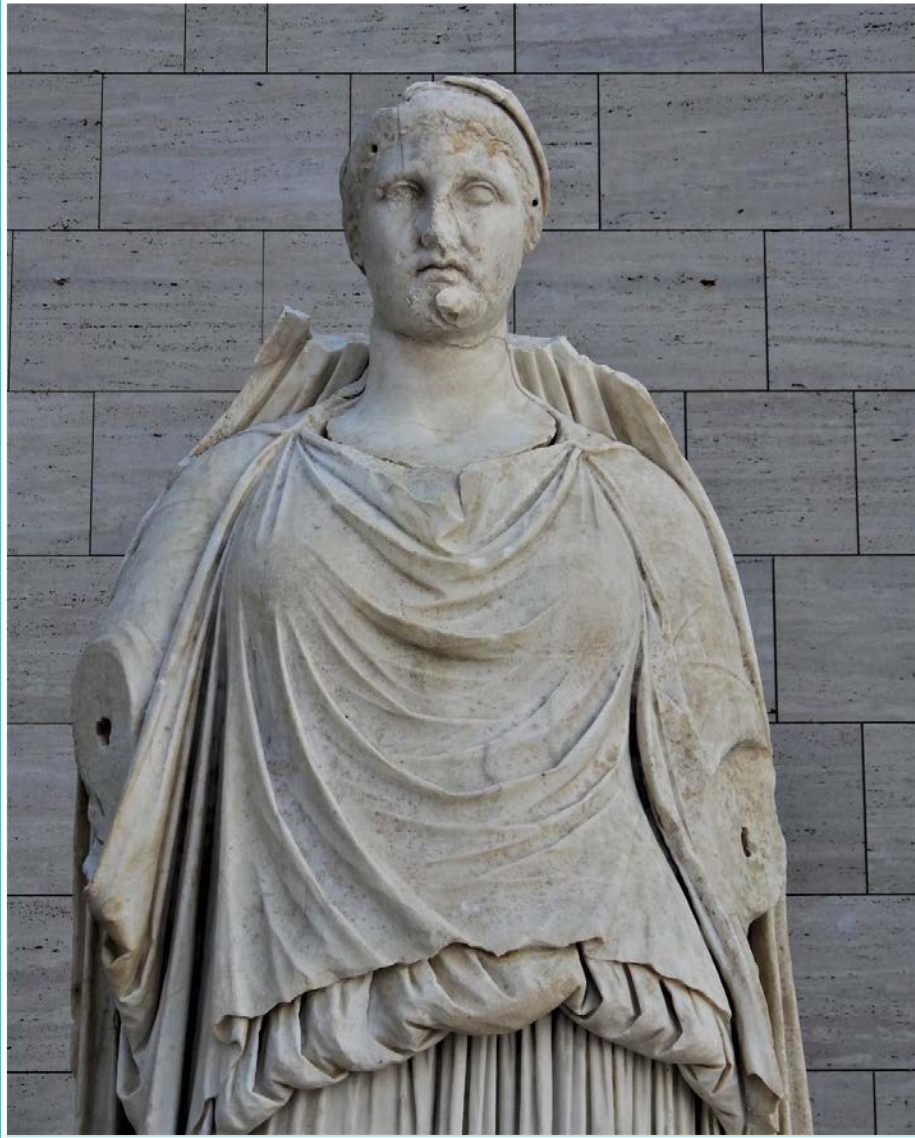
Εφορεία Αρχαιοτή-  
των Ημαθίας

## Eirene, Roman copy



Metropolitan Museum





## Head and neck in place on statue body

KOTTARIDI, PHOTO

# Palatitsia monument: base and reconstruction

Drawings Haddad and Saatsoglou-Paliadeli

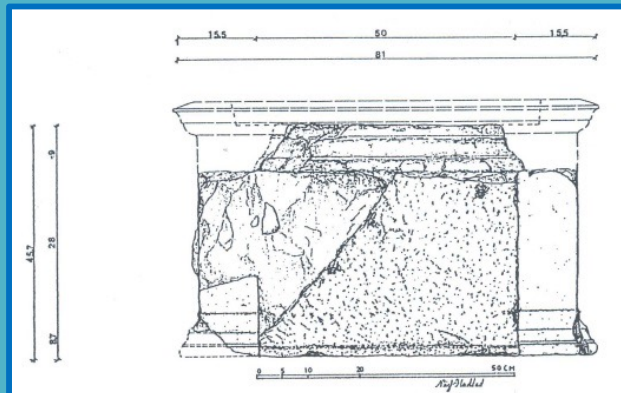


Fig. 8. Statuary base 2 c: the monument reconstructed

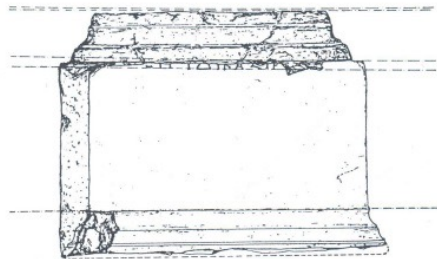


Fig. 9. Statuary base 2 c: the inscribed side

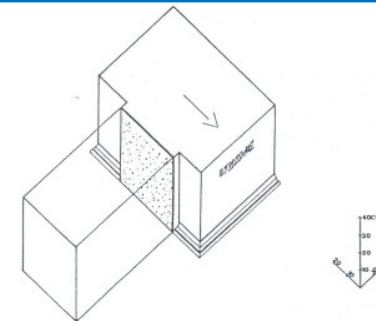


Fig. 10. Statuary base 2 c: hypothetical position of the monument

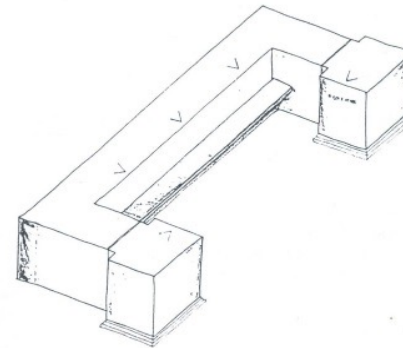


Fig. 11. Statuary base 2 c: hypothetical reconstruction of the statuary group



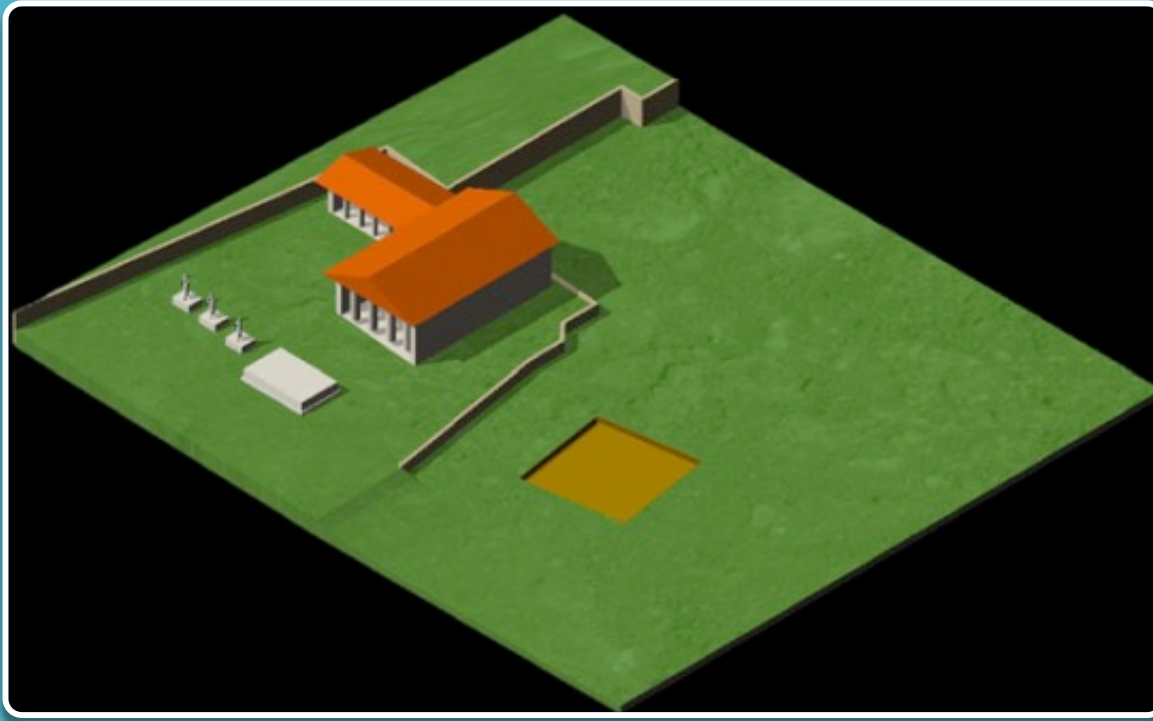
## “Tomb of Eurydice”

Photo: Drougou and Saatsaglou-Paliadeli



## Throne, “Eurydice” Tomb

Kottaridi 2006, P.s 59.2, 61,5



**Model:  
sanctuary of  
Eucleia in  
relation to  
“ditch” with  
atypical burials**

Kyriakou 2014

# 2008 atypical burial: Bronze cista with golden pyxis still inside

PHOTO KYRIAKOU 2014



PHOTO KYRIAKOU 2014





## 2008 Atypical Burial, cista and pyxis, and gold oak wreath

Photo: O. Palagia,, courtesy G.  
Tsouvala, Vergina Museum



Oak wreath  
from 2008  
atypical burial  
at Aegae



**2009 atypical burials:  
right: adult burial  
left: child's burial in  
"panathenaic" vase**





**Fragment of panathenaic type vase: 2009  
atypical burial**



**Gold olive wreath  
inside silver  
“panathenaic”  
vase, 2009  
atypical burial**

photo Kyriakou 2016

**From the burial of  
the young child  
(2009 atypical  
burial):  
gold ornaments**

Kyriakou 2016



# Oak Wreaths from Great Tumulus at Vergina

## Tomb II

Photo: archive of the excavation of Vergina



## Tomb III

Photo, Andronikos 1987



# Oak Wreaths

**Wreath from Tomb III**



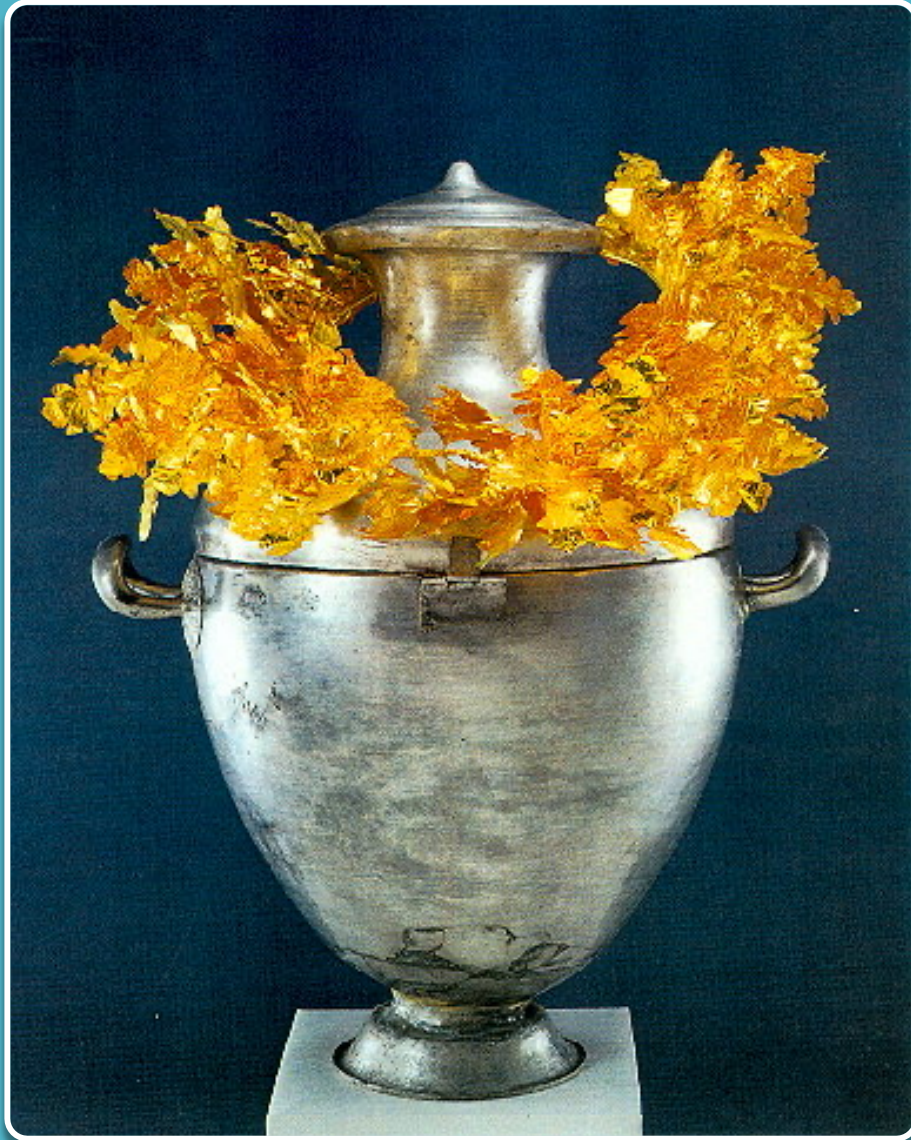
**Wreath from 2008  
atypical burial**





## **Tomb II: larnax (box): cremated male remains with oak wreath**

Photo Andronikos 1987

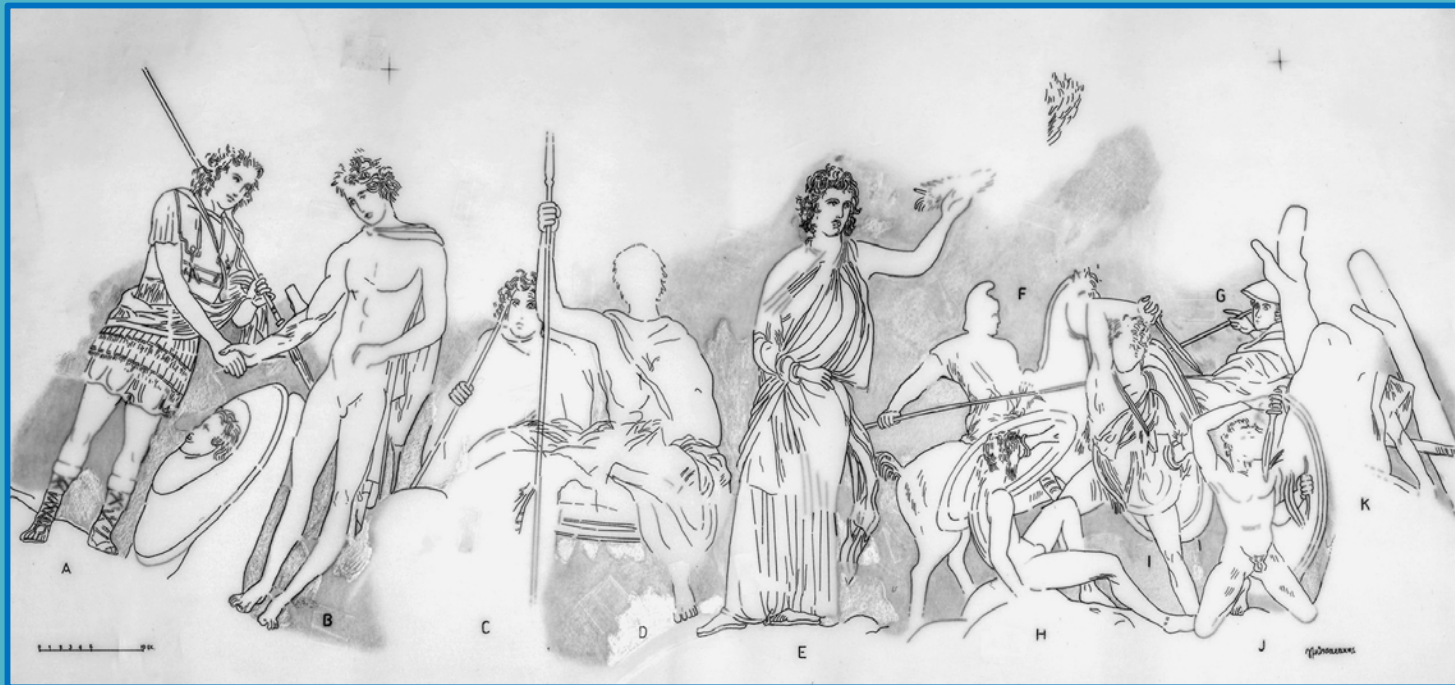


**Oak wreath,  
Silver hydria,  
Tomb III (of the  
Prince), Vergina**

Photo Andronikos 1987

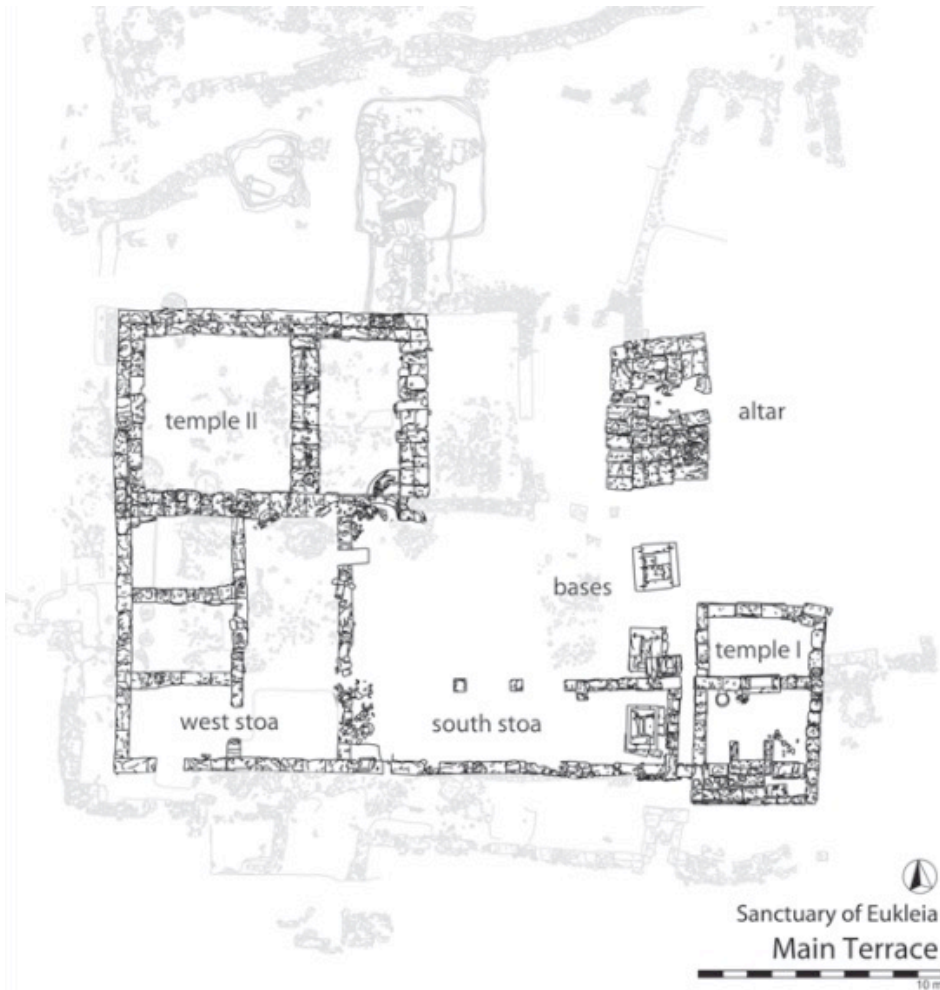


# The engraved representation on the panathenaic type vase from 2009 burial: *G. Mitsakakis' reconstruction*



## ***D. Tsipotas' reconstruction: the engraved representation on the panathenaic type vase***





**Post-Argead additions  
to the**

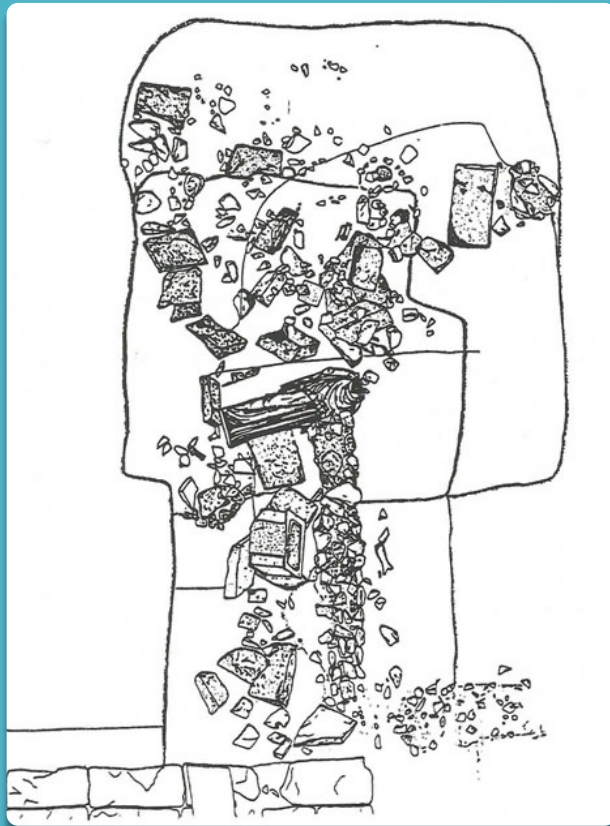
**Eucleia sanctuary:**

**Temple 1 3<sup>rd</sup> century  
BCE**

**South stoa 2<sup>nd</sup>  
century BCE**

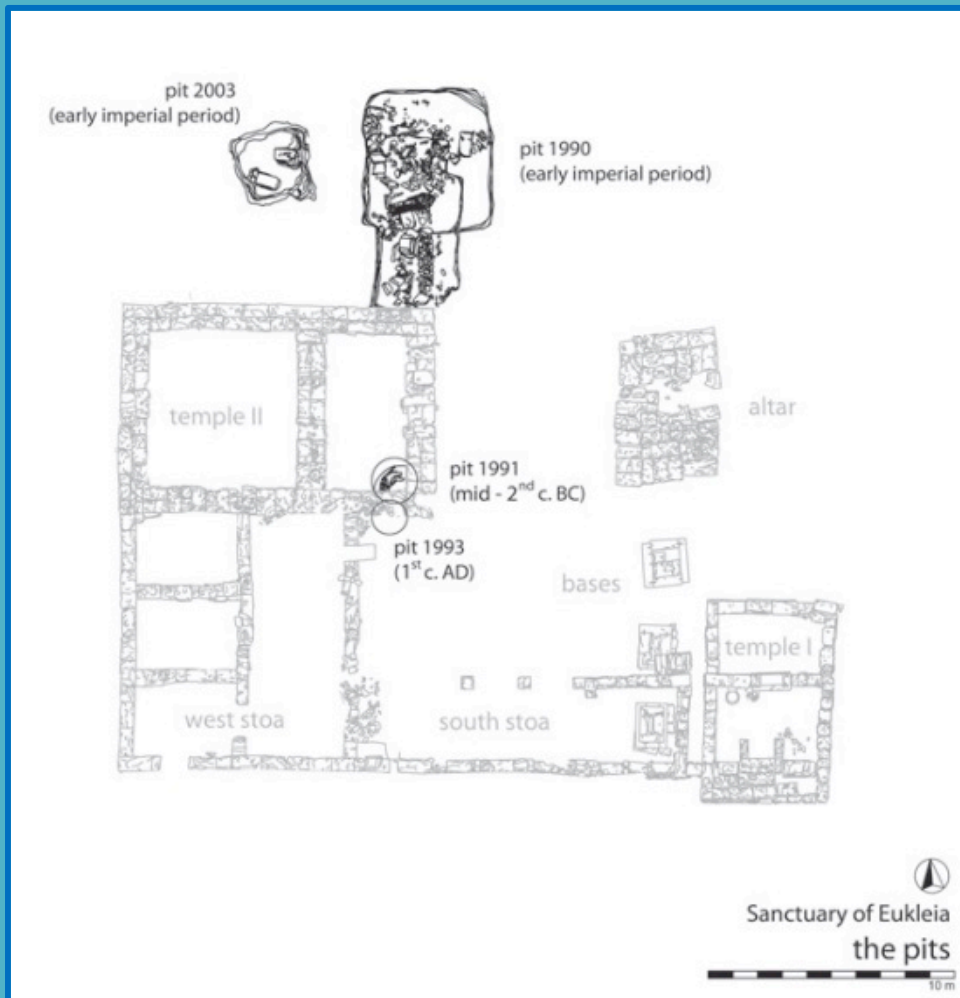
**Statue base partially  
enclosed, “face”  
possibly changed**

Kyriakou, 2020



## Eucleia sanctuary: 1990 statue pit

Aristotle University of Thessaloniki, Excavation at Vergina,  
drawing N. Haddad in Saatoglou-Paliadeli 1990



## Eucleia sanctuary: All 4 pits

N. Haddad, in Saatoglou-Paliadeli

1993



# Lanning statue

**SMITH COLLEGE, NORTHAMPTON,  
MASSACHUSETTS**

**PHOTO: MARIANNE MILES**



# Lanning statue wedding

Smith College Twitter



## Marketing to alumnae: 1932 memorial Wedgewood plate

<https://www.worthpoint.com/worthopedia/1932-wedgwood-plate-smith-college-408983666>





## Lanning statue in winter

PHOTO: SMITH COLLEGE FACEBOOK

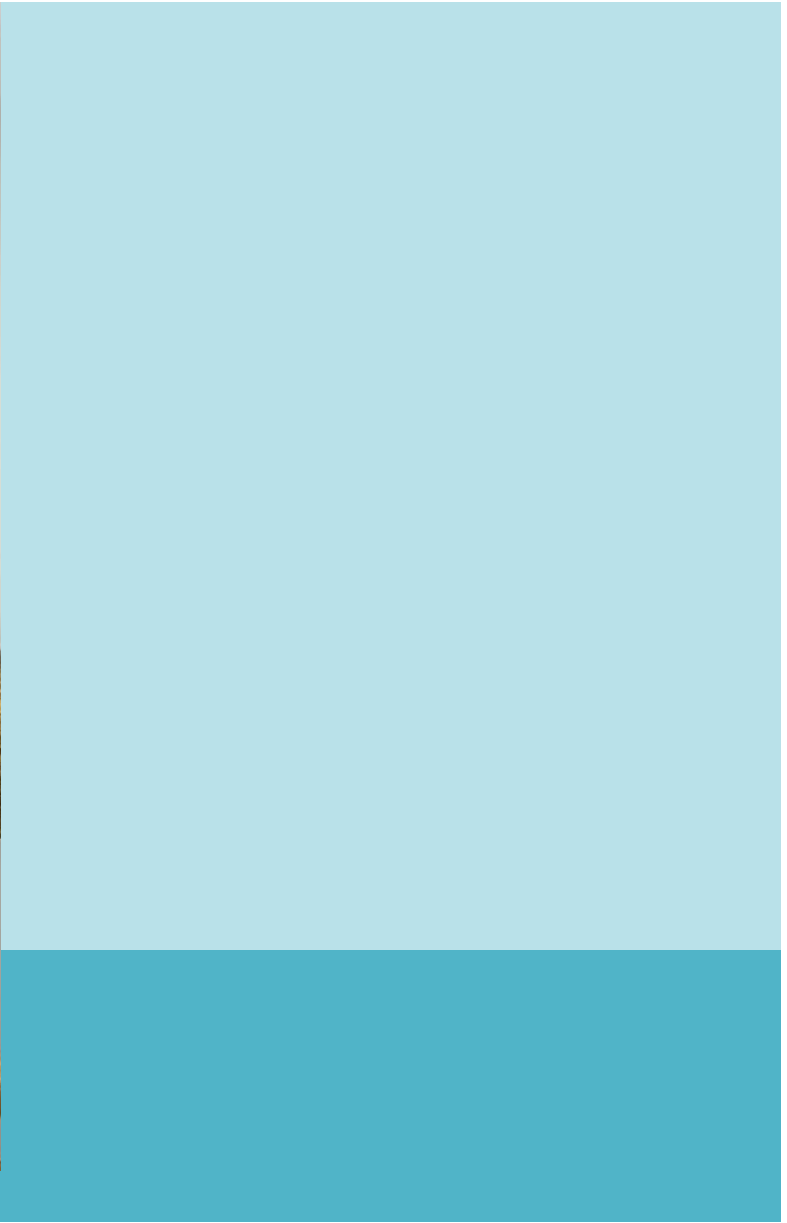






**Eurydice/Eucleia statue in  
new Vergina museum:**

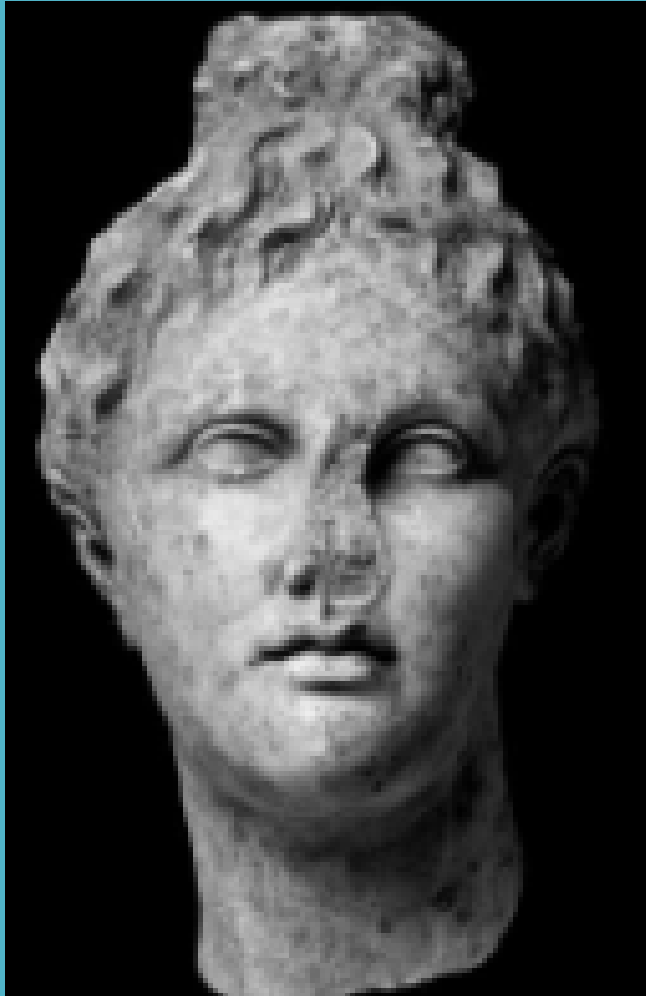
**three podia discussed in  
background**



# Eucleia sanctuary diagram

Kyriakou 2014





Head of young  
woman from 1990  
Pit at Eucleia  
sanctuary